

## Review and Reinforce

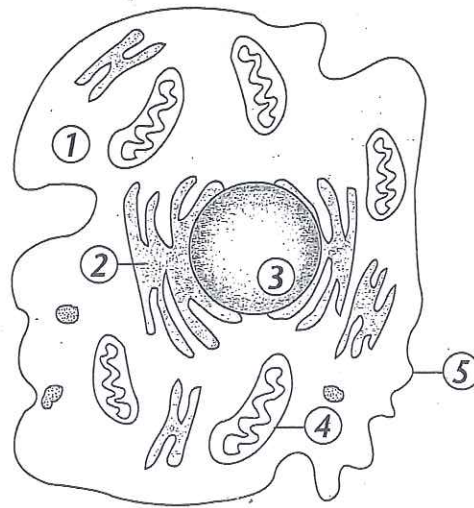
## Looking Inside Cells

## Understanding Main Ideas

Identify each of the cell structures in the figure.

1. cytoplasm
2. endoplasmic reticulum
3. nucleus
4. mitochondria
5. cell membrane

Simplified Animal Cell



## Building Vocabulary

On a separate sheet of paper, write a definition for each of these terms.

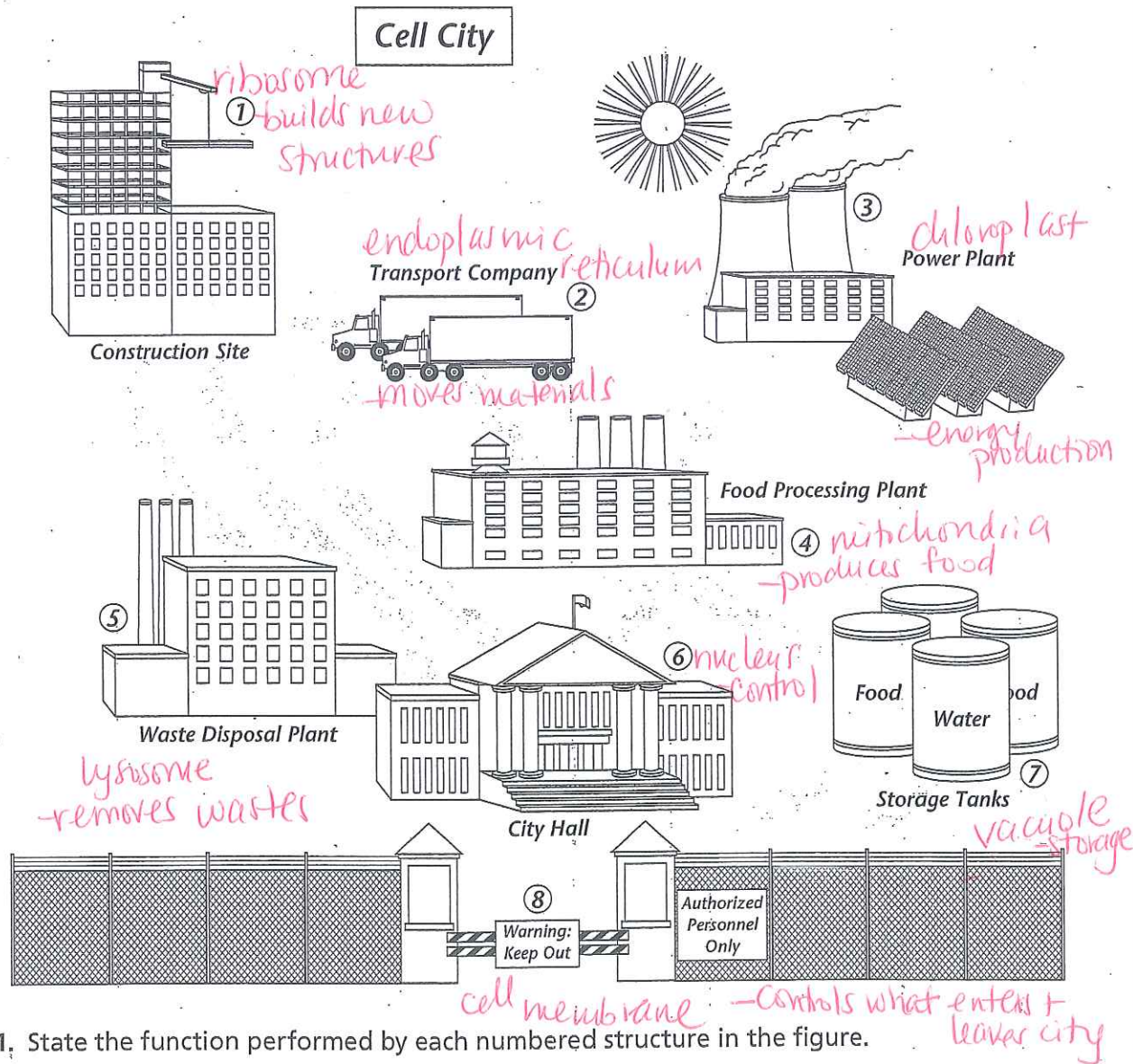
6. tissue group of similar cells that work together
7. chloroplast organelle that uses light to make food in plants
8. ribosome organelle that makes proteins
9. nucleus control center of the cell
10. mitochondria organelle that breaks down food to make energy
11. organ group of different tissues that function together
12. multicellular made up of many cells

**Enrich**

# Looking Inside Cells

The figure below shows a city that is a model for a cell. Study the figure, and answer the questions that follow on a separate sheet of paper.

## Modeling Cell Structures



1. State the function performed by each numbered structure in the figure.
2. Now name a cell structure that performs each of these same functions.
3. Does "Cell City" represent a plant cell or an animal cell? Explain your answer.

plant cell because it contains chloroplasts

Place the outside corner, the corner away from the dotted line, in the corner of your copy machine to copy onto letter-size paper.