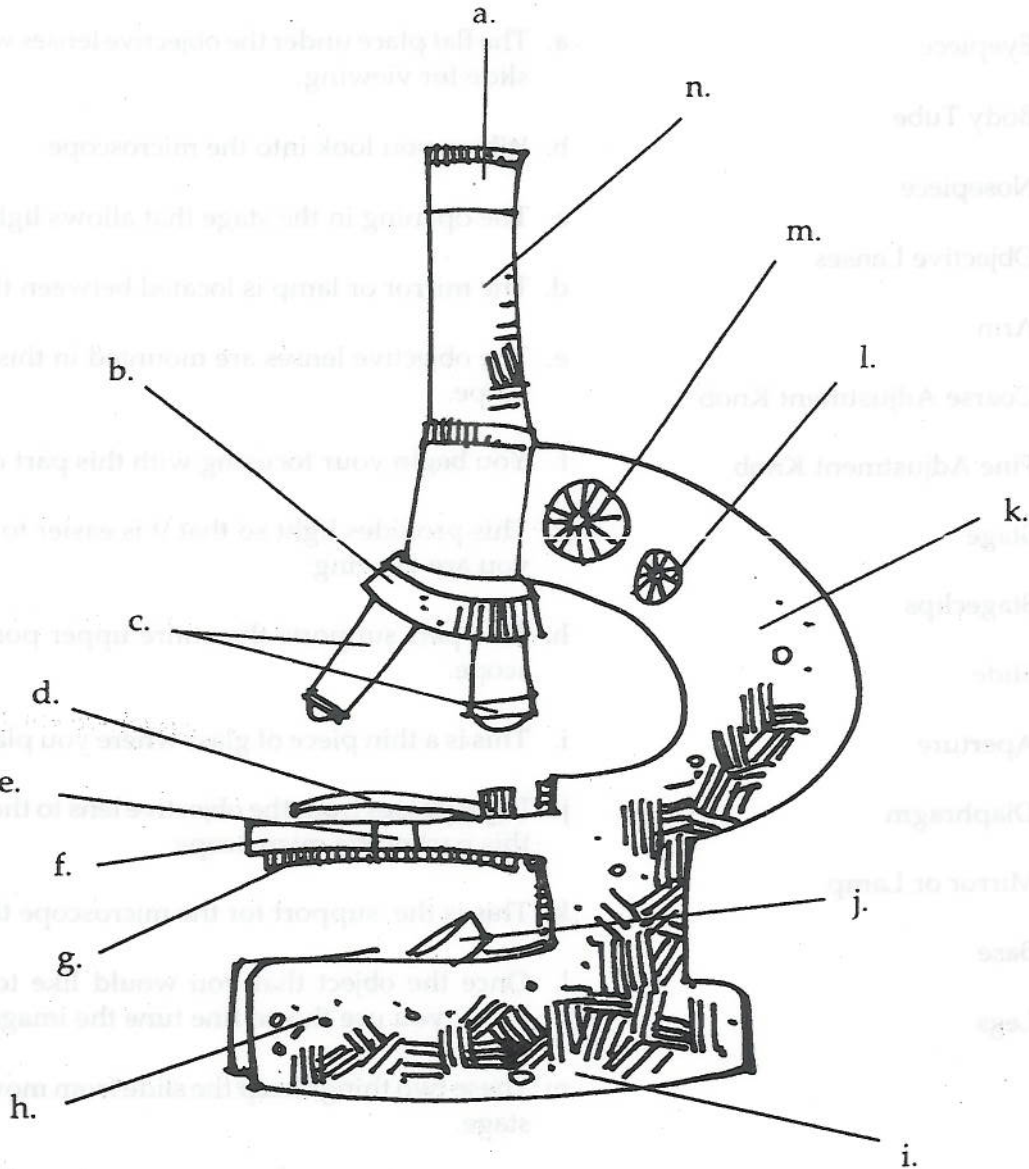


— microscope anatomy quiz —

name _____

Identify the parts of the microscope by writing the letter of the part in the space next to the correct name. One space will remain blank when you are all done.



- | | | |
|-----------------|------------------------------|------------------|
| _____ eyepiece | _____ coarse adjustment knob | _____ diaphragm |
| _____ legs | _____ mirror or lamp | _____ stage |
| _____ body tube | _____ fine adjustment knob | _____ stageclips |
| _____ nosepiece | _____ objective lenses | _____ aperture |
| _____ arm | _____ base | _____ slide |

— microscope function quiz —

name _____

Match the parts of the microscope with their proper description by writing the letter of the description next to the name of the part.

- | | |
|----------------------------|---|
| ___ Eyepiece | a. The flat place under the objective lenses where you place the slide for viewing. |
| ___ Body Tube | b. Where you look into the microscope. |
| ___ Nosepiece | c. The opening in the stage that allows light through. |
| ___ Objective Lenses | d. The mirror or lamp is located between these two things. |
| ___ Arm | e. The objective lenses are mounted in this part of the microscope. |
| ___ Coarse Adjustment Knob | f. You begin your focusing with this part of the microscope. |
| ___ Fine Adjustment Knob | g. This provides light so that it is easier to see the object that you are viewing. |
| ___ Stage | h. This part supports the entire upper portion of the microscope. |
| ___ Stageclips | i. This is a thin piece of glass where you place your specimen. |
| ___ Slide | j. Light passes from the objective lens to the eyepiece through this part of the microscope. |
| ___ Aperture | k. This is the support for the microscope that holds it up. |
| ___ Diaphragm | l. Once the object that you would like to view comes into focus, you use this to fine tune the image. |
| ___ Mirror or Lamp | m. These two things keep the slide from moving around on the stage. |
| ___ Base | n. This disk under the stage controls the amount of light that passes through the aperture. |
| ___ Legs | o. There may be two or three of these mounted on the nosepiece. Each one magnifies a different power. |